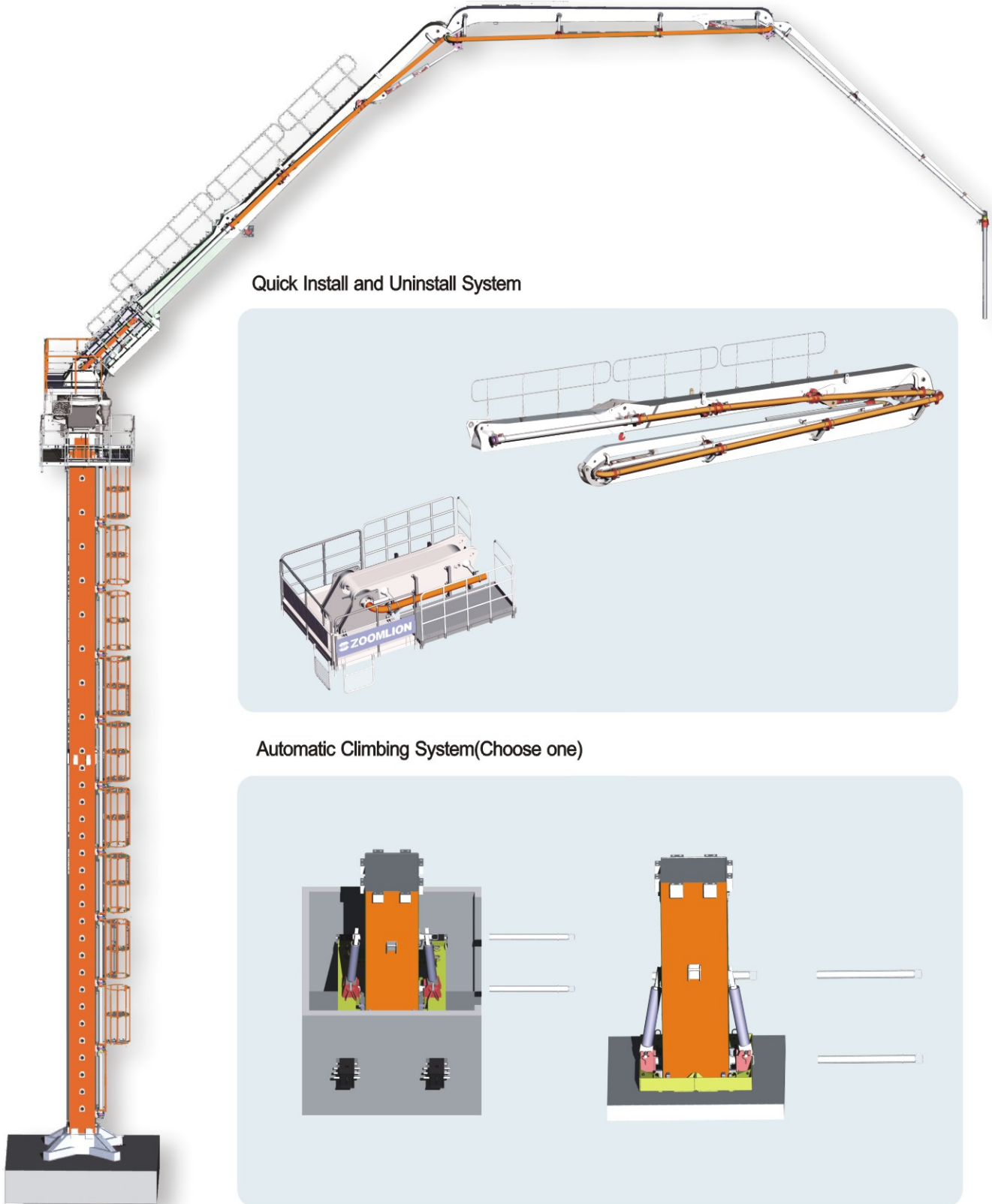
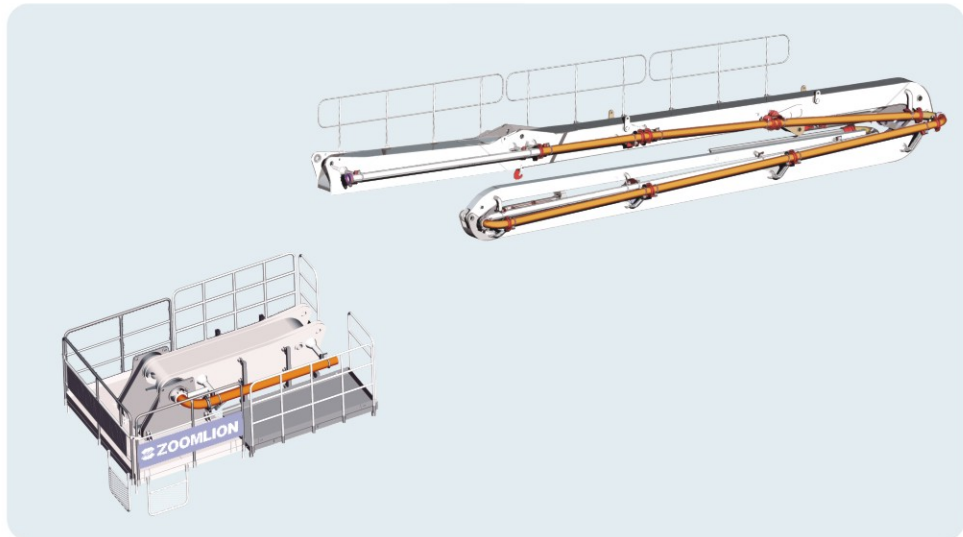


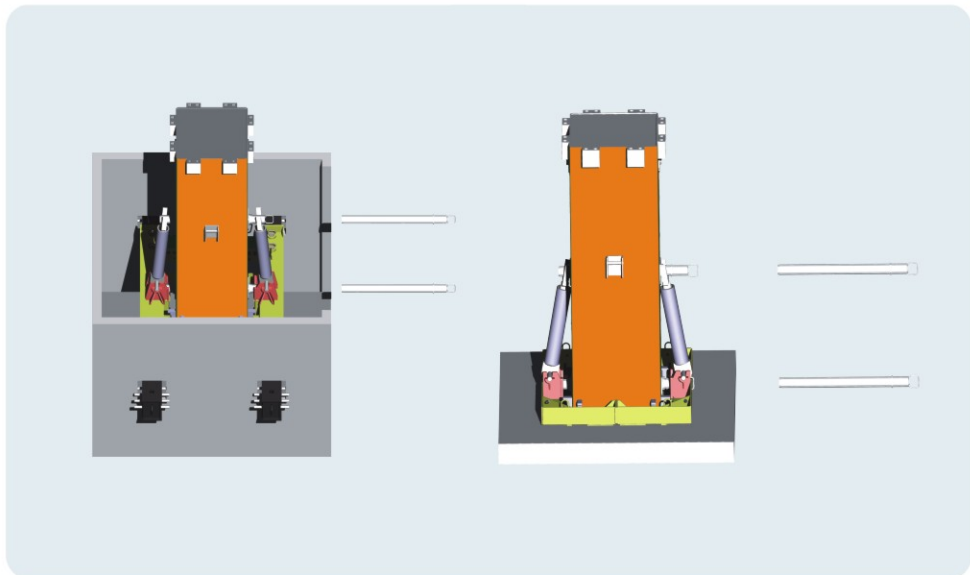
HGC33D



Quick Install and Uninstall System



Automatic Climbing System(Choose one)

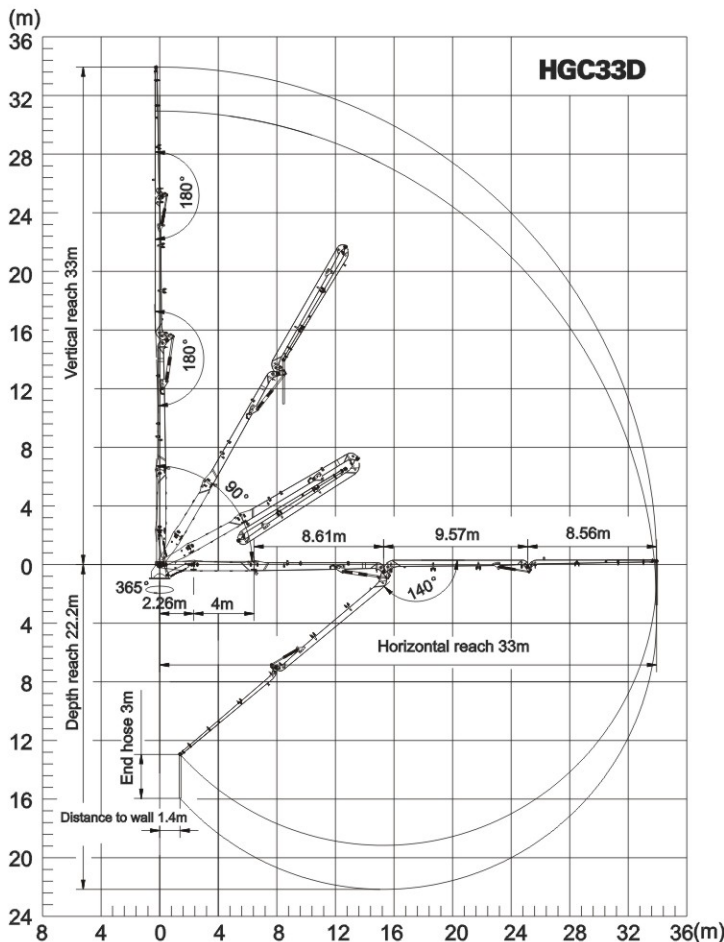


HGC33D

Main Features

ZOOMLION concrete placing boom provides professional solutions for high buildings and large-scale constructions.

- Wide application: HGC33D used in free standing or inner climbing to meet various jobsites.
- Precise control and high reliability: HGC33D is based on ZOOMLION boom design and tower crane design technology, ensuring stable performance of machine. Control of all boom functions and the climbing device via remote control. Electronic-hydraulic proportional control technology enables precise control and convenient operations.
- Flexible and quick setup: with humanized design philosophy, we take every details into consideration to facilitate quick and convenient install and uninstall of the machine.
- Easy climbing operation: climbing is carried out simply and quickly by two lifting cylinders in a convenient method with the help of the hydraulics of the boom unit.



Technical data

Vertical reach	33m	
Horizontal reach	33m	
Depth of reach	22.2m	
Free standing height	24m	
Arms	3	
Folding system	R	
Rotation range	365°	
Pipeline	Φ133×4	
End hose length	3m	
Control mode	Remote	
Column mode	0.75m × 0.75m	
Climbing mode	Two lifting cylinder	
Column	2 sections	3 sections
The heaviest single part	5700KG	4200kg
Power input	15kW	
Power supply	380V/50HZ	

Technical data and characteristic subject to modifications without notice